

Basic Ejector

SBPL 50 HF

Part no...:10.02.01.01597

Home > Vacuum Technology for Automation > Vacuum Components > Vacuum Generators > Basic Ejectors > Basic ejectors SBPL > SBPL 50 HF

Basic ejector with maximum suction capacity



Size: 50

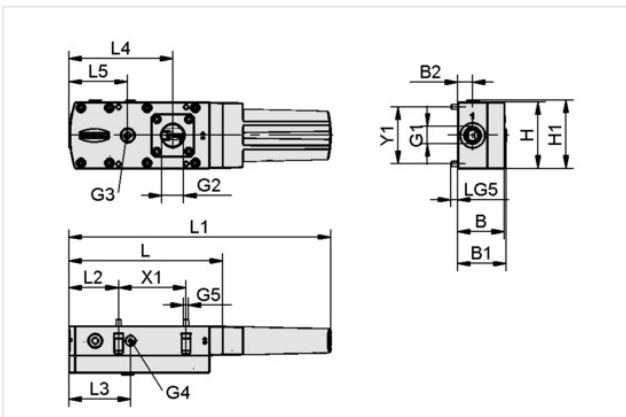
Shape: High Flow

Suction rate (max.): 500 l/min

Air consumption suction: 160 l/min

Weight: 0.75 kg

Design Data



Attribute	Value
B	51 mm
B1	53 mm
B2	16 mm
G1	G3/8"-F
G2	G3/4"-F
G3	G1/4"-F
G4	G1/8"-F
G5	M5-M
H	72 mm
H1	74 mm
L	167.50 mm
L1	285.30 mm
L2	54 mm
L3	67 mm
L4	113 mm
L5	64 mm
LG5	8.50 mm
X1	73.50 mm
Y1	62 mm

Technical Data

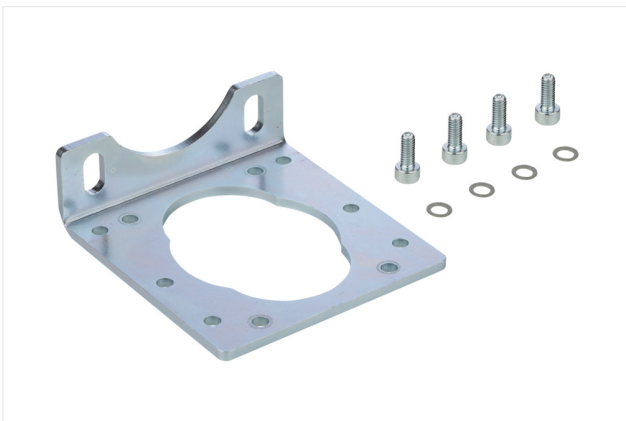
Basic Ejector

SBPL 50 HF

Part no...:10.02.01.01597

Attribute	Value
Size	50
Degree of evacuation	60 %
Max. vacuum	600 mbar
Suction rate (real)	500 l/min
Suction rate (theo)	650 l/min
Suction rate (real)	30 m ³ /h
Suction rate (theo)	39 m ³ /h
Air consumption suction	160 l/min
Air consumption suction	9.75 m ³ /h
Sound level free	65 dB(A)
Sound level suction	55 dB(A)
Pressure range (operating pressure)	2.0 ... 6.0 bar
Pressure range (operating pressure)	29.0 ... 87.0
Recomm. internal hose diameter compressed air	6 mm
Recomm. internal hose diameter vacuum	25 mm
Weight	0.75 kg
Operating temperature	0 ... 60 °C
Max. vacuum	17.72 inHg
Product family	SBPL

Accessories



BEF-WIN 72x25x77 SBPL

Part no...:10.02.01.01705

Construction use: Basic ejector

Length L: 72 mm

Width B: 25 mm

Height H: 77 mm

Basic Ejector

SBPL 50 HF

Part no...:10.02.01.01597

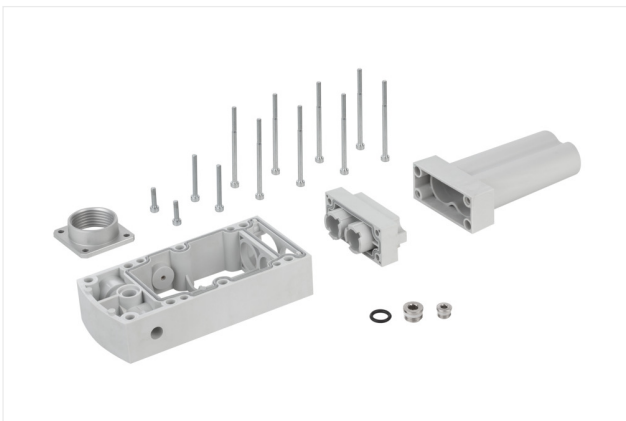


EMV 3 24V-DC 2/2 NC K-2P

Part no...:10.05.01.00366

Internal diameter d: 6 mm

Length L: 64.5 mm

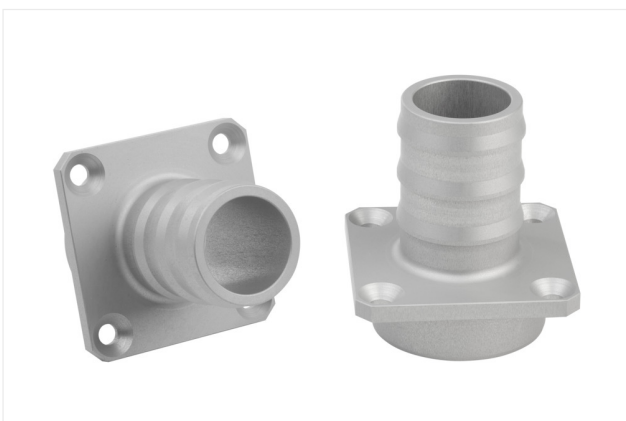


SET SBPL 75/100

Part no...:10.02.01.01685

Construction use: Basic ejector

Size: 75/100



ST 25 AL-EL

Part no...:10.02.01.01680

Material: Aluminum

Construction use: Basic ejector

External diameter D: 25 mm

Length L: 4 mm

Width B: 46 mm

Basic Ejector

SBPL 50 HF

Part no...:10.02.01.01597



VAM 40 V DR

Part no...:10.07.02.00035

External diameter D: 40 mm

Measuring range: -1,00 ... 0,00 bar

Construction shape manometers: With sealing ring

Vacuum connection: G1/8"-M



VAM-D 30x30 VP10 G1/8-AG

Part no...:10.07.02.00055

Length L: 30 mm

Width B: 30 mm

Measuring range: -1,0 ... 10,0 bar

Vacuum connection: G1/8"-M



VFT G1/2-IG 100

Part no...:10.07.01.00126

Connection: G1/2"-F

Shape: Long filter insert

Nominal flow rate: 19.2 m³/h

Filter pore size: 100 µm

Basic Ejector

SBPL 50 HF

Part no...:10.02.01.01597



VFT G1/2-IG 80

Part no...:10.07.01.00125

Connection: G1/2"-F

Shape: Long filter insert

Nominal flow rate: 18 m³/h

Filter pore size: 80 μm



VRS-ST 15x101.7 SBPL

Part no...:10.02.01.01687

Construction use: Basic ejector

External diameter D: 15 mm

Length L: 101.7 mm



VSi V D M12-4

Part no...:10.06.02.00580

Measuring range: -1,0 ... 0,0 bar

Electrical connection: Male connect M12, 4 pol

Indication: 2xLED

Protection type IP: IP 65

Basic Ejector

SBPL 50 HF

Part no...:10.02.01.01597



VSi V M12-4

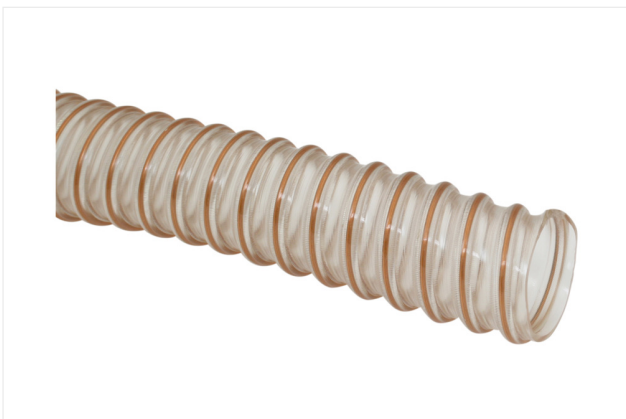
Part no...:10.06.02.00570

Measuring range: -1,0 ... 0,0 bar

Electrical connection: Male connect M12, 4 pol

Indication: LED

Protection type IP: IP 65



VSL 33-25 PU-DS-AS

Part no...:10.07.09.00051

External diameter D: 33 mm

Internal diameter d: 25 mm

Length max.: 20 m

Material hose: PU, wire spiral, antistatic

Bending radius min.: 20 mm

Pressure range (operating pressure): -1.00 ... 3.86 bar

Operating temperature: -40 ... 90 °C



VFT G3/4-IG 80

Part no...:10.07.01.00128

Connection: G3/4"-F

Shape: Long filter insert

Nominal flow rate: 36 m³/h

Filter pore size: 80 μm

Basic Ejector

SBPL 50 HF

Part no...:10.02.01.01597



VFT G3/4-IG 100

Part no...:10.07.01.00129

Connection: G3/4"-F

Shape: Long filter insert

Nominal flow rate: 46.2 m³/h

Filter pore size: 100 µm

Spare parts



SD 102x71x33 SBPL

Part no...:10.02.01.01585

Construction use: Basic ejector

Length L: 102 mm

Width B: 71 mm

Height H: 33 mm

Basic Ejector

SBPL 50 HF

Part no...:10.02.01.01597



SEP HF 3 13 22

Part no...:10.02.01.01348

Shape: High Flow

Number of stages: 3

Nozzle size: 1.3 mm

Hole diameter: 22 mm

Degree of evacuation: 61 %

Pressure range (operating pressure): 2.0 ... 6.0 bar

Pressure optimal: 4 bar

Suction rate (max.): 297.6 l/min

Air consumption suction: 74 l/min



DI-RA 112.5x34.8 NBR-55 SBPL

Part no...:10.02.01.01541

Construction use: Basic ejector

Length L: 112.5 mm

Width B: 34.8 mm

Height H: 2.8 mm



ERS SEP-22 6xRUE-KLAP

Part no...:10.02.01.01450

Construction use: Ejector module

Size: 22

contains: 6x flap

Basic Ejector

SBPL 50 HF

Part no...:10.02.01.01597



O-RING 10x2.5 NBR-70

Part no...:10.07.08.00002

Material: Nitrile rubber NBR

Internal diameter d: 10 mm